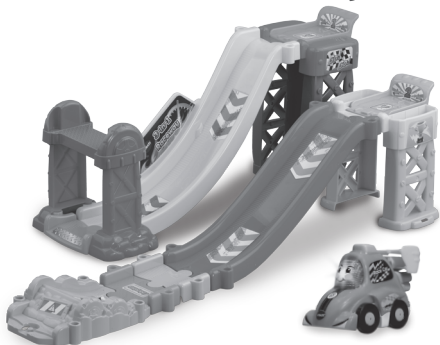


vtech®

Parent's Guide

Toot-Toot Drivers®

3-in-1 Raceway



TM & © 2019 VTech Holdings Limited.
All rights reserved.
Printed in China.
91-003774-003 (X)

VTech understands that a child's needs and abilities change as they grow and with that in mind we develop our toys to teach and entertain at just the right level...

vtech **Baby**

Toys that will stimulate their interest in different textures, sounds and colours

I am...

...responding to colours, sounds and textures

...understanding cause and effect

...learning to touch, reach, grasp, sit-up, crawl and toddle

Birth-36 months



Pre-School

Interactive toys to develop their imagination and encourage language development

I want...

...to get ready for school by starting to learn the alphabet and counting

...my learning to be as fun, easy and exciting as can be

...to show my creativity with drawing and music so my whole brain develops

3-6 years



Electronic Learning Computers

Cool, aspirational and inspiring computers for curriculum related learning

I need...

...challenging activities that can keep pace with my growing mind

...intelligent technology that adapts to my level of learning

...National Curriculum based content to support what I'm learning at school

4-10 years

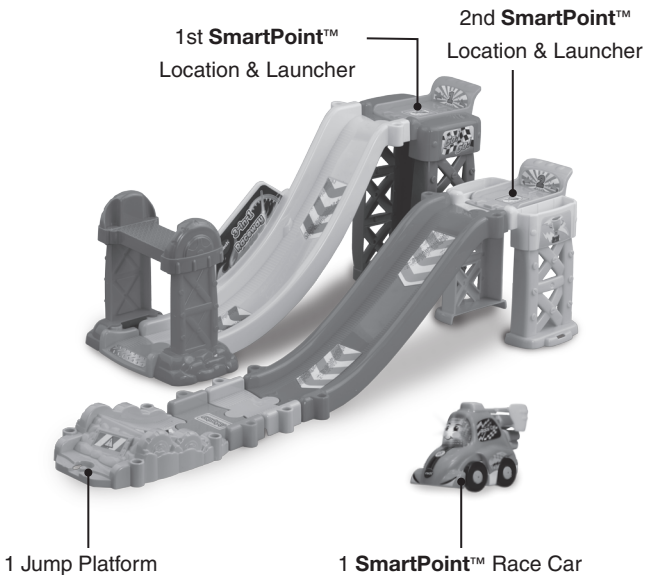


To learn more about this and other VTech® products, visit www.vtech.co.uk

INTRODUCTION

Thank you for purchasing the **VTech® Toot-Toot Drivers® 3-in-1 Raceway!**

Race through exciting courses with the **3-in-1 Raceway** by **VTech®**. Rearrange the tracks and create a dual raceway, stunt track or super raceway! Includes a cute **SmartPoint™** Race Car that plays 3 songs & 6 melodies. Feature button triggers fun movements. Features 2 **SmartPoint™** locations that trigger phrases, sounds and tunes.



INCLUDED IN THIS PACKAGE



One **SmartPoint™**
Race Car



One small platform with
SmartPoint™ launcher



Two short
platform supports



One large platform with
SmartPoint™ launcher



Two tall
platform supports



Two bridge supports



One bridge



One ramp track A



One ramp track B



One jump track A



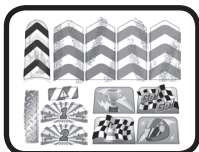
One jump track B



One 1/4 track, male



One adaptor track



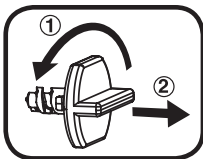
One sheets of labels

One Parent's Guide

WARNING: All packing materials, such as tape, plastic sheets, packaging locks and tags are not part of this toy and should be discarded for your child's safety.

NOTE: Please keep this parent's guide as it contains important information.

Unlock the packaging locks:

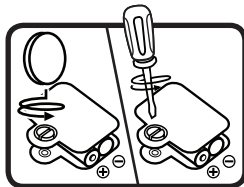


- ① Turn the packaging lock anticlockwise several times.
- ② Pull out and discard the packaging lock.

GETTING STARTED

Battery Removal And Installation Race Car

1. Make sure the unit is turned **OFF**.
2. Locate the battery cover on the bottom of the unit. Use a coin or a screwdriver to loosen the screw.
3. Install 2 new AAA (AM-4/LR03) batteries following the diagram inside the battery box. (The use of new alkaline batteries is recommended for maximum performance).
4. Replace the battery cover and tighten the screw to secure.



BATTERY NOTICE

- Use new alkaline batteries or fully charged NI-MH (Nickel Metal-hydride) rechargeable batteries for best performance.
- Use only batteries of the same or equivalent type as recommended.
- Do not mix different types of batteries: alkaline, standard (carbon-zinc) or rechargeable, or new and used batteries.
- Do not use damaged batteries.
- Insert batteries with the correct polarity.
- Do not short-circuit the battery terminals.
- Remove exhausted batteries from the toy.
- Remove batteries during long periods of non-use.
- Do not dispose of batteries in fire.
- Do not charge non-rechargeable batteries.
- Remove rechargeable batteries from the toy before charging (if removable).
- Rechargeable batteries are only to be charged under adult supervision.

Disposal of batteries and product



The crossed-out wheellie bin symbols on products and batteries, or on their respective packaging, indicates they must not be disposed of in domestic waste as they contain substances that can be damaging to the environment and human health.



The chemical symbols Hg, Cd or Pb, where marked, indicate that the battery contains more than the specified value of mercury (Hg), cadmium (Cd) or lead (Pb) set out in Battery Directive (2006/66/EC).

The solid bar indicates that the product was placed on the market after 13th August, 2005.

Help protect the environment by disposing of your product or batteries responsibly.

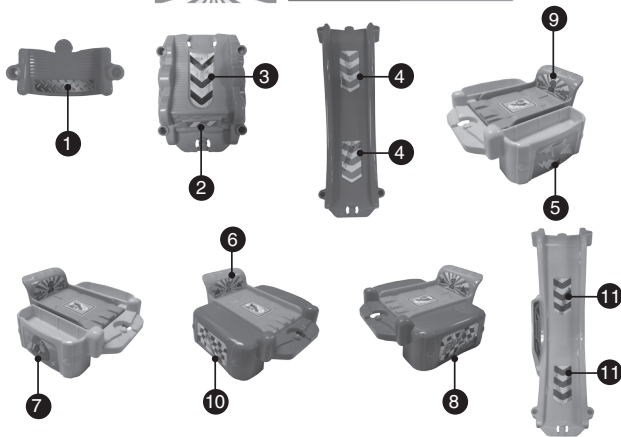
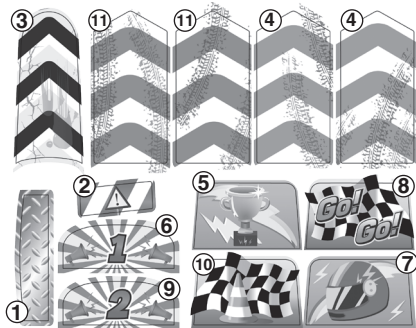
For more information, please visit:

www.recycle-more.co.uk

www.recyclenow.com

LABEL APPLICATION

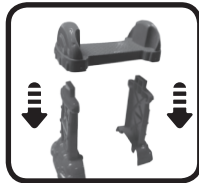
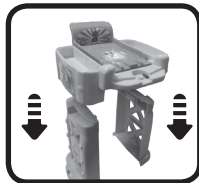
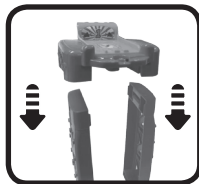
Please stick the labels to the play set securely as indicated on the following pages:



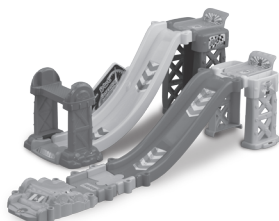
ASSEMBLY INSTRUCTIONS

With the **VTech® Toot-Toot Drivers® 3-in-1 Raceway**, safety comes first. To ensure your child's safety, adult assembly is required.

1. Attach the tall platform supports to the small launcher platform. You will hear a "click" sound to indicate the pieces are secure. Once the pieces are connected, they cannot be detached.
2. Attach the short platform supports to the large launcher platform. You will hear a "click" sound to indicate the pieces are secure. Once the pieces are connected, they cannot be detached.
3. Attach the bridge supports to the bridge. You will hear a "click" sound to indicate the pieces are secure. Once the pieces are connected, they cannot be detached.



After the above steps, connect these pieces to the included track pieces. You can configure them into different shapes.



Dual Raceway



Stunt Track



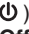

Super Raceway

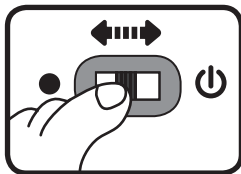
You are now ready to play! Connect the track pieces together. Or connect them to other **Toot-Toot Drivers®** play sets (each sold separately).

Note: **SmartPoint™** vehicles respond to **SmartPoint™** locations with different phrases, music or fun sound effects (each sold separately).

RACE CAR FEATURES

1. On/Off/ Switch

To turn the Race Car **On**, slide the **On/Off Switch** to the **On** () position. To turn the Race Car **Off**, slide the **On/Off Switch** to the **Off** () position.



2. Automatic Shut-Off

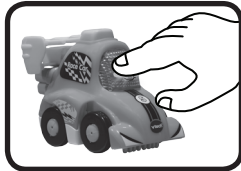
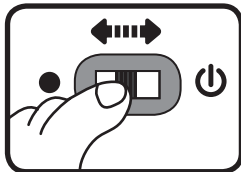
To preserve battery life, the included Race Car will automatically power-down after approximately 60 seconds without input. The unit can be turned on again by pressing the light up button or by pushing the race car quickly.

Note: This product is in try-me mode in the packaging. After opening the package, turn the vehicle off and on again to proceed with normal play. If the unit powers down while playing, we suggest changing the batteries.

ACTIVITIES

Race Car

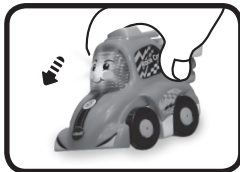
1. Slide the **On/Off Switch** to turn the unit **ON**. You will hear race car sounds, a song and a phrase. The light will flash with the sounds.
2. Press the **Light Up Button** to hear sounds, songs, phrases and melodies. The light will flash with the sounds.



3. Press the **Feature Button** on the vehicle to activate a mechanical function on the vehicle and hear fun sounds. The light will flash with the sounds.



4. Push the Race Car to hear fun sounds and melodies. While the melody is playing, push the Race Car again to add in fun sounds on top of the melody. The light will flash with the sounds.



5. For added fun, the Race Car interacts with the **Toot-Toot Drivers® 3-in-1 Raceway**. Simply place the Race Car on one of the two **SmartPoint™** locations to see the Race Car's light flash and to hear fun sounds, short tunes and phrases. The Race Car even interacts with other **Toot-Toot Drivers®** play sets (each play set sold separately).



MELODY LIST

1. Old Grey Mare
2. London Bridge
3. Camptown Races
4. Ta Ra Ra Boom De Ay
5. Old King Cole
6. Shoo Fly
7. Looby Loo

SING-ALONG SONG LYRICS

Song 1

Vroom, Vroom time to zoom
Vroom, Vroom time to zoom
Vroom, Vroom time to zoom
Join me, watch me race and zoom!

Song 2

Oh, let's go racing all day long
Faster than fast, quicker than quick
Oh, let's go racing all day long
I'm brave and fast and strong

Song 3

Toot-Toot Drivers
Toot-Toot Drivers
I'm a Toot-Toot Drivers Race Car
Let's speed around the track (Toot-Toot)
We'll zoom ahead just try and catch me
Let's go play and see (Toot-Toot)

CARE & MAINTENANCE

1. Keep the unit clean by wiping it with a slightly damp cloth.
2. Keep the unit out of direct sunlight and away from any direct heat source.
3. Remove the batteries when the unit will not be in use for an extended period of time.
4. Do not drop the unit on hard surfaces and do not expose the unit to moisture or water.

TROUBLESHOOTING

If for some reason the unit stops working or malfunctions, please follow these steps:

1. Turn the unit **OFF**.
2. Interrupt the power supply by removing the batteries.
3. Let the unit stand for a few minutes, then replace the batteries.
4. Turn the unit **ON**. The unit should now be ready to play with again.
5. If the unit still does not work, install a new set of batteries.

If the problem persists, please contact our Consumer Services Department and a service representative will be happy to help you.

CONSUMER SERVICES

Creating and developing **VTech**[®] products is accompanied by a responsibility that we at **VTech**[®] take very seriously. We make every effort to ensure the accuracy of the information, which forms the value of our products. However, errors sometimes can occur. It is important for you to know that we stand behind our products and encourage you to call our Consumer Services Department with any problems and/or suggestions that you might have. A service representative will be happy to help you.

UK Customers:

Phone: 0330 678 0149 (from UK) or +44 330 678 0149 (outside UK)

Website: www.vtech.co.uk/support

Australian Customers:

Phone: 1800 862 155

Website: support.vtech.com.au

NZ Customers:

Phone: 0800 400 785

Website: support.vtech.com.au

Product Warranty / Consumer Guarantees

UK Customers:

Read our complete warranty policy online at vtech.co.uk/warranty.

Australian Customers:

VTECH ELECTRONICS (AUSTRALIA) PTY LIMITED – CONSUMER GUARANTEES

Under the Australian Consumer Law, a number of consumer guarantees apply to goods and services supplied by VTech Electronics (Australia) Pty Limited. Please refer to vtech.com.au/consumerguarantees for further information.

**CLASS 1
LED PRODUCT**



**Visit our website for more
information about our products,
downloads, resources and more.**

www.vtech.co.uk
www.vtech.com.au



TM & © 2019 VTech Holdings Limited.
All rights reserved.
Printed in China.
91-003774-003 (X)